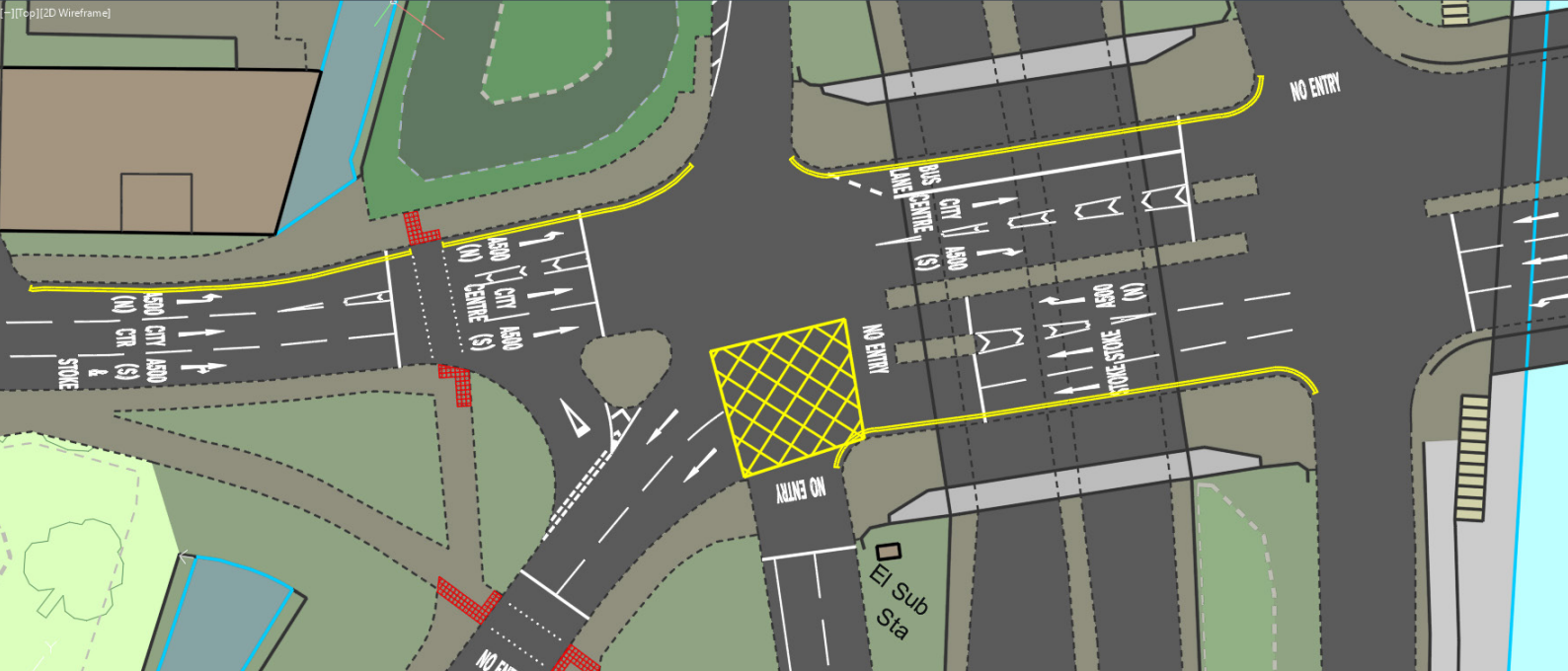


Road Marking Design

Design complex road marking systems with ease



Road users rely on a range of cues to help them navigate their trips safely and efficiently. Among the most essential types of markings include lane lines, directional arrows, pedestrian crossings, bus and cycle lanes. The design and placement of these elements are carefully considered

by traffic and transportation engineers. With TrafXPLAN Lines software, engineers can design complex road marking easily based on regional guidelines and place them on a design plan to view in realistic 3D drawings.

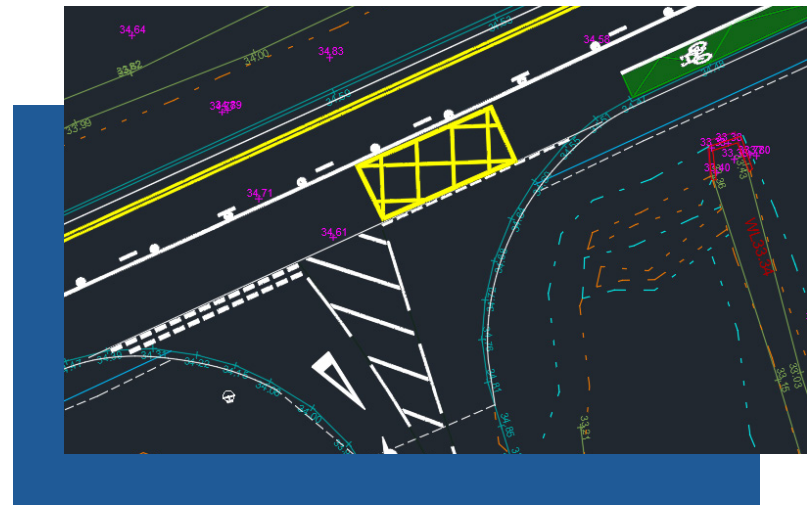
Benefits

Design complex road marking systems with ease

Dynamic editing capabilities provide accuracy and flexibility, while providing immediate feedback and guidance saves you time from re-working the designs.

Visualize in 3D

Bring your design one step further to completion—display your markings in 3D to get a better understanding and a realistic view of terrain and road corridor designs quickly.



Style name	Colour	Add prefix?	Layer name
KTS_TACTAREA_BUFF	33	<input checked="" type="checkbox"/>	CH-Pr_25_93_60_23-M-Dn_PathTactile_BUFF
KTS_CONES	10	<input type="checkbox"/>	XX-Pr_25_30_86-M-Ty_TimCones
KTS_SIGNSYMBOLS	7	<input type="checkbox"/>	CH-Ss_40_10_90_T2 SNPS-M-Dn_SignSuppGen
KTS_LINES	7	<input checked="" type="checkbox"/>	CH-Pr_35_31_85_90 MKLO-M-Dn_RdMk_White
KTS_RAILS	130	<input type="checkbox"/>	CH-Ss_25_15_60 PEGR-M-Dn_VrsPedBarrier
KTS_TRO	50	<input checked="" type="checkbox"/>	CH-Pr_35_31_85_90 MKLO-M-Dn_RdMk_TRO_Yellow
KTS_TACTAREA_CORD	32	<input checked="" type="checkbox"/>	CH-Pr_25_93_60_23-M-Dn_PathTactile_CORD
KTS_LINES_BLK	RGB 0,0,0	<input checked="" type="checkbox"/>	CH-Pr_35_31_85_90 MKLO-M-Dn_RdMk_Black
KTS_DUCTS	90	<input type="checkbox"/>	CH-Ss_37_16_90_28 LGDU-M_TrafficSignalDuct
KTS_LINES_YEL	50	<input type="checkbox"/>	CH-Pr_35_31_85_90 MKLO-M-Dn_RdMk_Yellow
KTS_STUDS	7	<input checked="" type="checkbox"/>	CH-Pr_35_90_60_71 MKRS-M-Dn_RdMkStud
KTS_TRO_White	7	<input checked="" type="checkbox"/>	CH-Pr_35_31_85_90 MKLO-M-Dn_RdMk_TRO_White
KTS_SIGNALS	30	<input type="checkbox"/>	CH-Ss_75_30_35 TESS-M_TrafficSignal
KTS_TRO_Red	232	<input checked="" type="checkbox"/>	CH-Pr_35_31_85_90 MKLO-M-Dn_RdMk_TRO_Red

Export data easily

Data can be easily exported, and templates shared for BIM collaboration with other professionals who construct, operate, and maintain road infrastructure.

Ensure design compliance

TrafXPLAN Lines allows you to create markings, quickly and accurately, in accordance with the latest industry standard rules and regulations. Regular software updates include new rule changes and approved markings.

Features

With TrafXPLAN Lines, you can design complex road marking systems with ease while ensuring compliance with industry standards. Access a full library of standard markings or create your own territory specific markings. Real-time updates in 3D help you visualize your project and easily export 2D and 3D objects in the drawing.

Choose from a comprehensive library

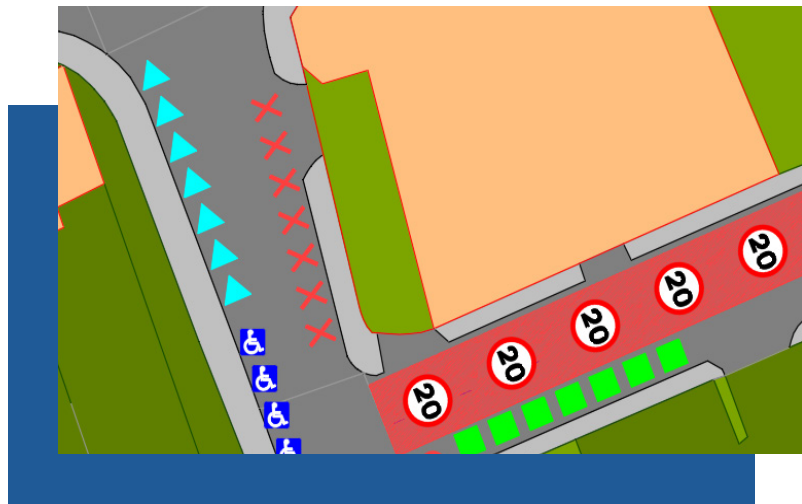
Select from a comprehensive library of markings including lines, arrows, text, hatching, calming, zigzags, bus, cycle, parking and bays. TrafXPLAN Lines provides more than just markings to help you with your traffic management projects. It also includes a range of features such as cats' eyes, tactile paving, keep left bollards, specialist surfacing, guarding railing, street furniture, and much more.

Draw, design and edit quickly

Most markings can be created with a few clicks and items can be drawn dynamically without the intrusion of pop-up dialog options to slow down the process. Additional CAD grip points provides swift editing abilities. Properties are adjustable within permitted limits to reduce your time amending and developing schemes.

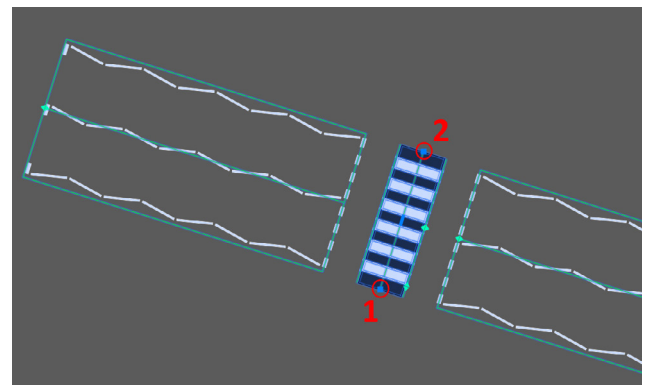
Custom road markings

When standard sets of markings don't meet local requirements, TrafXPLAN Lines includes the ability to add custom markings symbols and hatchings alongside the standard markings. Create your own library of various territory specific markings that can be shared with other stakeholders.



3D draping and viewing

With TrafXPLAN Lines, both 2D designs and 3D draped layout can be visualised quickly with the 3D view tools and Driver's Eye View functions. Additional knowledge or training is not required to create a 3D model of a road layout and scheme, and 3D draping is updated in real time when lines and symbols are edited.



Sustainable transport planning

All markings associated with bus and cycle lanes as well as tools to complete your design for low traffic neighbourhoods, including traffic calming features can help you with your sustainable transport planning. TrafXPLAN Lines software includes features to help manage temporary road works, lines of cones or cylinders, temporary road studs and barriers, and 3D trestle signs.

Export data easily

Easily export 2D and 3D objects in the drawing, including data/attributes that have been added. All markings, including 3D draped items, can be exported to various file formats such as IFC, SHP, and native DWG.

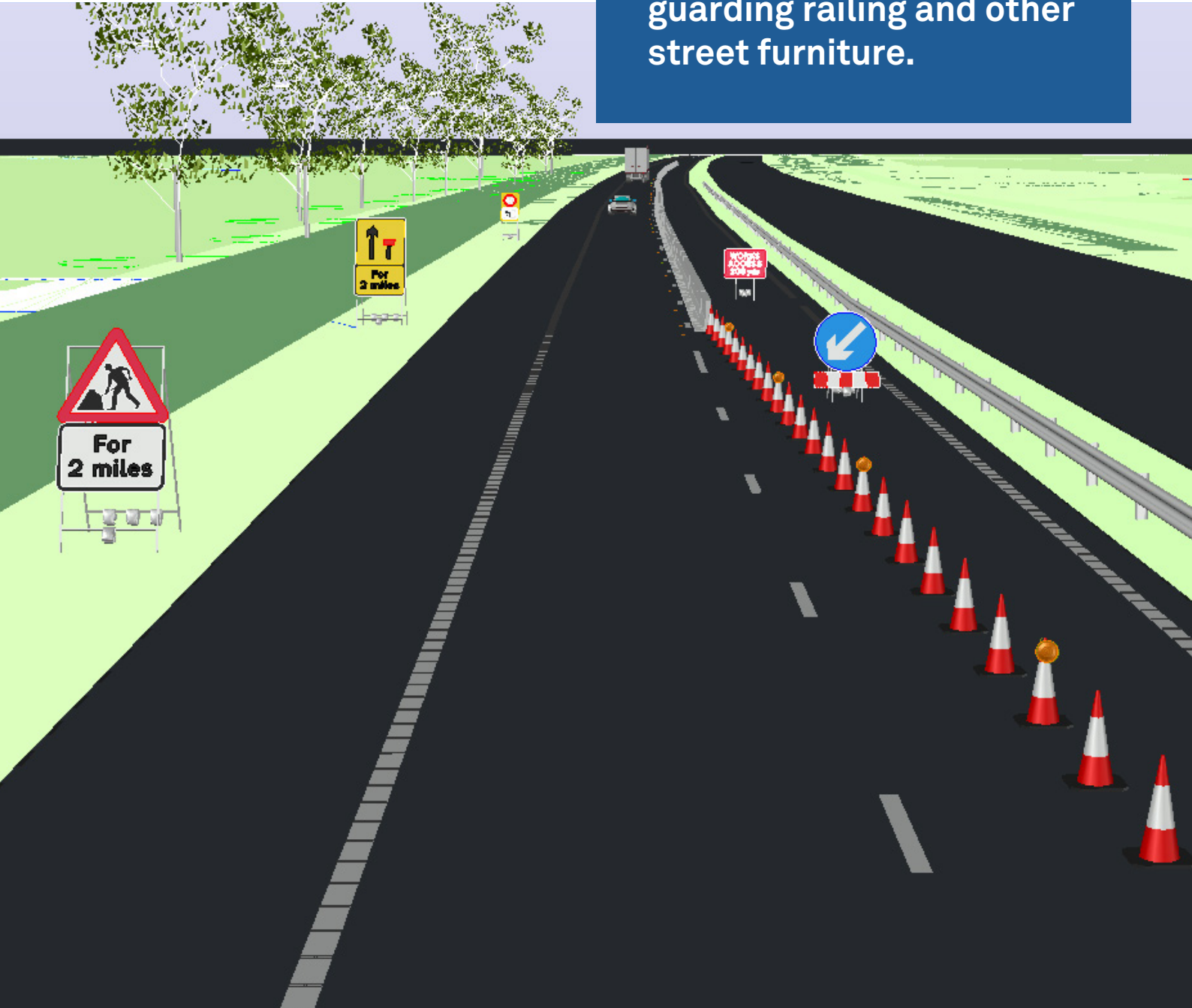


System Requirements & Supported Browsers

Supports the current and four previous versions of AutoCAD series of products. For details on platform and system requirements, including the list of all supported versions, please visit the product compatibility section using the QR code below.

TrafxPLAN Lines includes a range of features such as cats' eyes, tactile paving, keep left bollards, specialist surfacing, guarding railing and other street furniture.

UK_TPL_brochure_0226



Phone (Birmingham)
+44 (0) 3451 303040

Email
salesuk@transoftsolutions.com

Web
www.transoftsolutions.com/uk

Scan the code
to learn more

