



(M42 (M6))

Brownhills A452

Lichfield (A446)

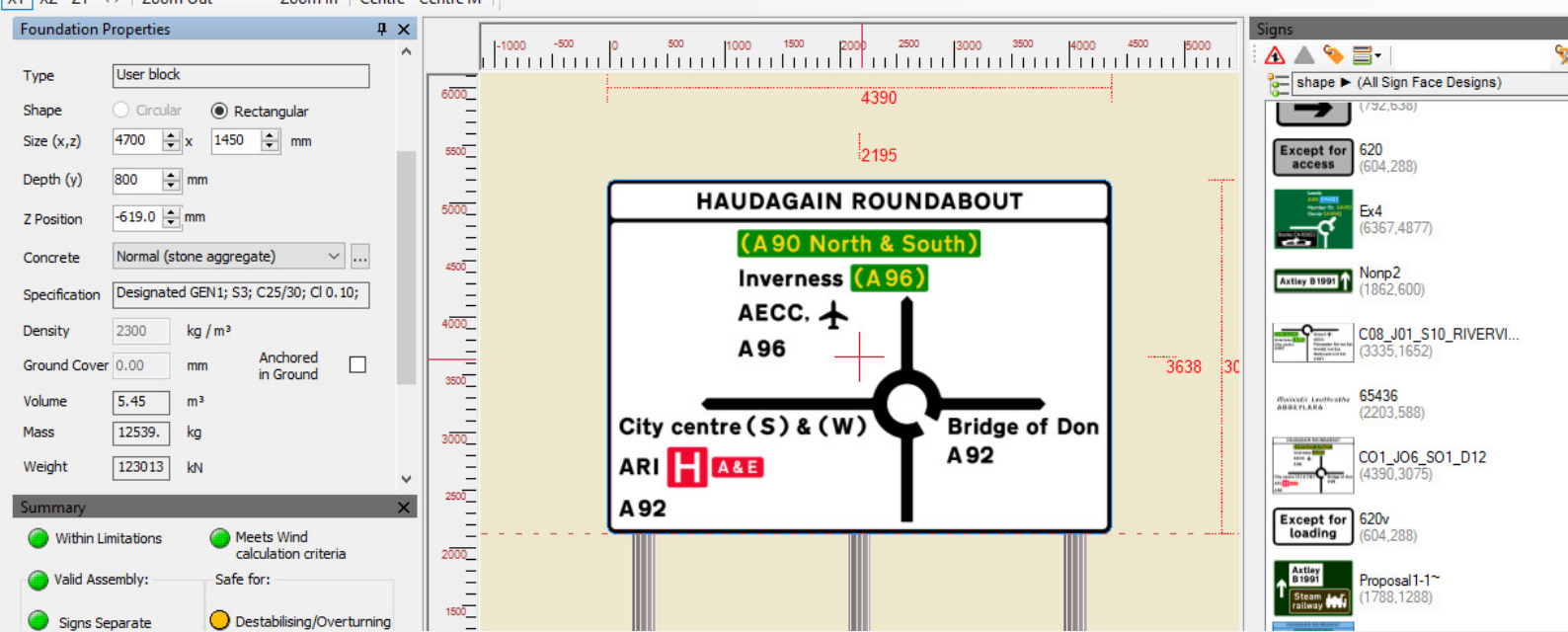
Birmingham  
(A45)



Bradnocks  
Marsh  
Barston

## Sign Post and Foundation Software

For Traffic Management and Road Safety  
Engineers and Sign Manufacturers



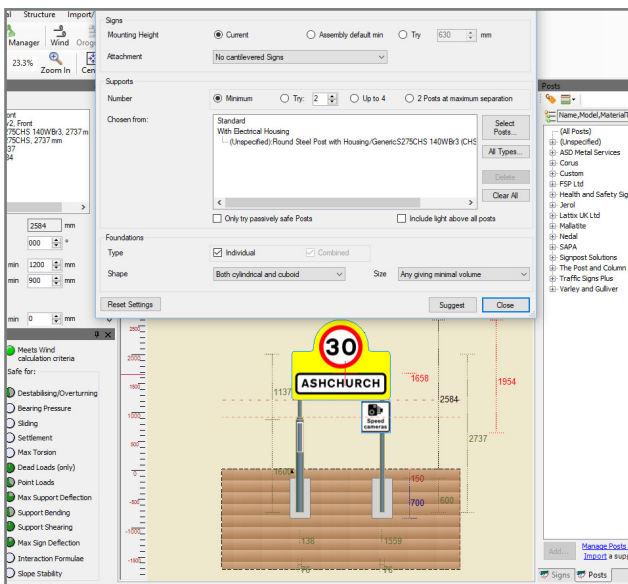
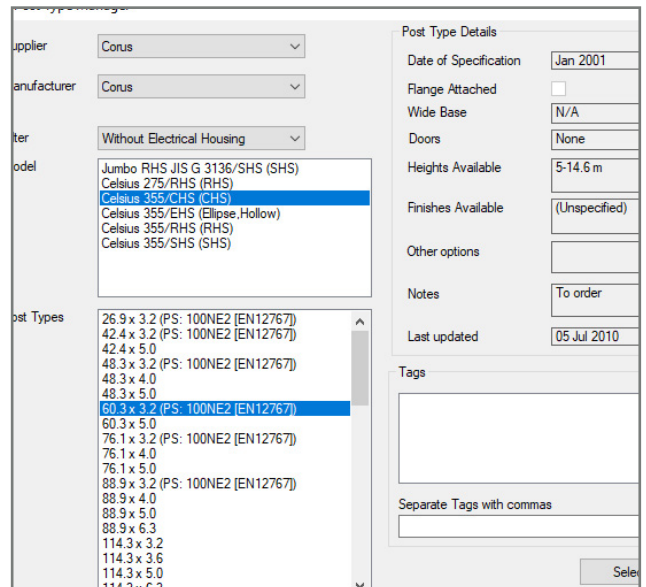
TrafXPLAN Post is a standalone sign structure software program that provides for the design of sign installations. It can also be used in combination with our leading TrafXPLAN Sign design software. Whilst many will use the AutoPost feature that suggests the most economical

structure, it can also be used to test their stability against the effects of wind loading by providing for existing structures to be modelled and tested for additional or replacement signs.

## Benefits

### Compliance and industry standards

TrafXPLAN Post is fully accredited by BSI, as a European Notified Body, to EN 12899-1:2007. It also enables you to design structures compliant with EN 12767:2019, all relevant Eurocodes, including EN 1991-1-4:2005 for wind loads, and, in the UK, relevant DMRB Standards.



### Achieve accurate results

TrafXPLAN Post provides full support for BIM and 3D when used with our design products such as TrafXPLAN Sign and TrafXPLAN Lines. It includes the ability to incorporate the sign face design with your proposals to create a 3D sign structure in TrafXPLAN Lines. In addition, you can author the data associated with the 3D sign structure to share with other BIM applications, such as Navisworks®.

# Features

## Design Validity for Traffic Light System

Designs are automatically checked, and passes (and fails) for each criteria is shown using a simple traffic light system.

## Post Manager

Manufacturers' data is specified in standardised XML format and can easily be imported as new types become available. Suggested designs can be restricted to a particular manufacturer, post type or material, or to Passively Safe supports only (or any combination and/or number).

## Complex Sign Arrangements

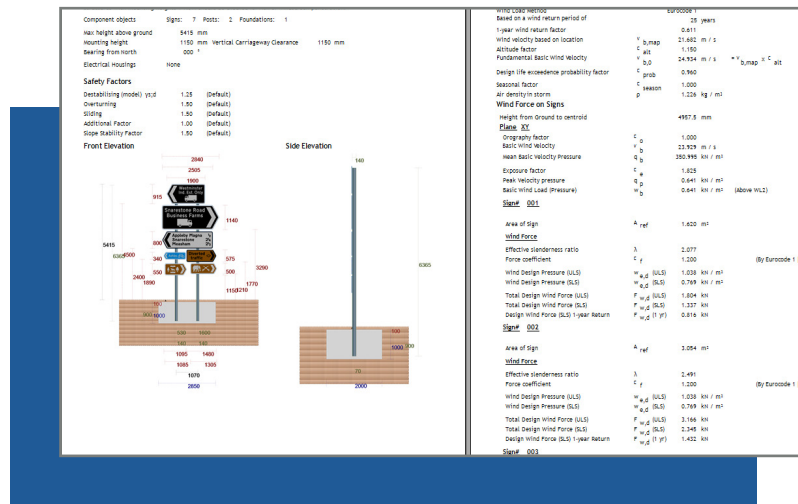
Multiple signs can be added to the posts and the weight of each and offset from the supports can also be specified, allowing the inclusion of Variable Message Signs.

## Sign Selection

Fully coloured sign face designs can be imported from TrafXPLAN Sign, but if you don't have this program, signs can also be selected from generic shapes and the required dimensions entered.

## Graphical Method For Determining Wind Loading

The Site or 'Environs' wizard allows for the wind pressure to be set for any sign installation, implementing the latest National Annex to BS EN 12899-1:2007, and also the more complete BS EN 1991-1-4:2005 Eurocode 1 where appropriate which will mostly give lower wind loads and therefore more economical designs.



## 3D Sign Structures in AutoCAD

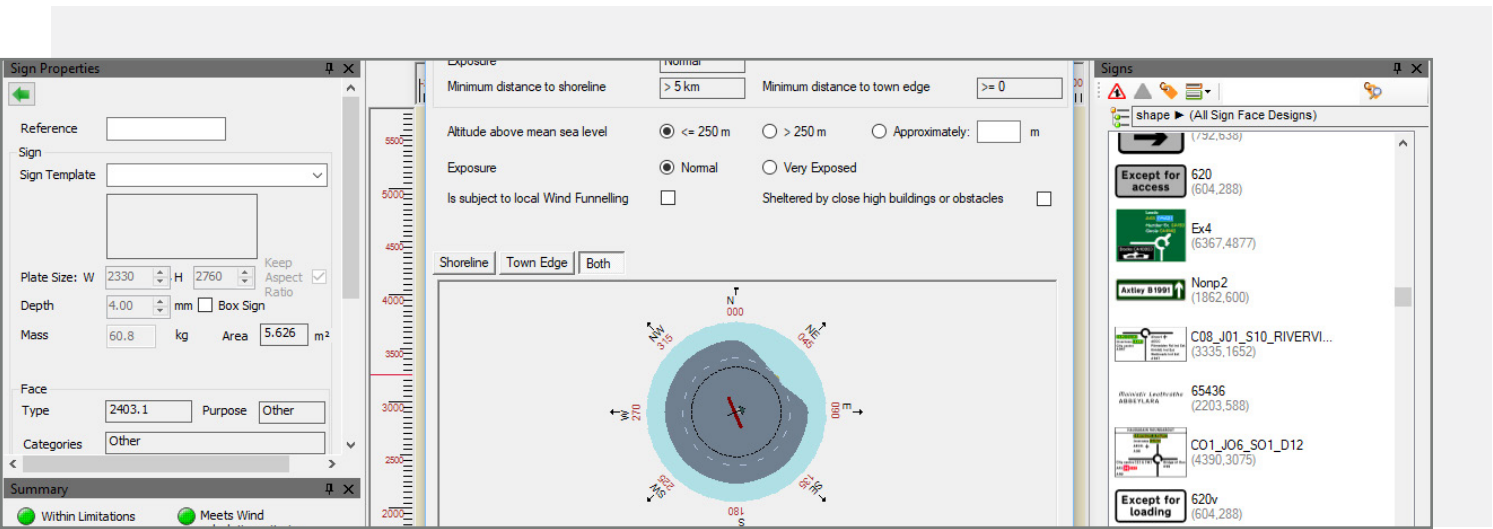
Full support is provided in our other products, such as TrafXPLAN Lines, TrafXPLAN Signals and KeyLIGHTS, for drawing a 3D sign structure.

## Automatic Suggested Installation Details

TrafXPLAN Post will suggest a range of valid post and foundation details, depending on selected criteria, for example if a planted foundation is required to clear footway services, or if the number of posts must be specified. Each suggested design can be viewed graphically, and the full details of each examined until the final design is committed.

## Full, Transparent Output And Comprehensive Reporting

A detailed report is available for any design, with all calculations and assumptions made clear so that any design can be checked for accuracy and suitability. This clearly indicates all passes and failures of any aspect of each proposal.



# System Requirements & Supported Browsers

Supports the current and four previous versions of AutoCAD series of products. For details on platform and system requirements, including the list of all supported versions, please visit the product compatibility section using the QR code below.

TrafxPLAN Post provides full support for BIM and 3D when used with our design products such as TrafxPLAN Sign and TrafxPLAN Lines.

UK\_TPP\_brochure\_0226



**Phone (Birmingham)**  
+44 (0) 3451 303040  
**Email**  
salesuk@transoftsolutions.com  
**Web**  
www.transoftsolutions.com/uk

Scan the code to learn more

